

GENERAL BOILER COMPANY., INC.

Electric Steam Boilers 100 PSI PRESSURE (80 PSI OPERATION)- available for 125&150PSI

ITEM (All Dim. In Inches) kWh	24	30	36	40	42	48	60	72	80	120
Boiler Horsepower	2.4	3.0	3.6	4.0	4.2	4.8	6.0	7.2	8.0	12
Steam Output: Lb/Hr @ 98% effc.	80	100	120	130	140	160	200	240	270	400
Electrical Input 3-phase										
480 V. at 1.2 Amps per kWh	29	36	43	48	50	58	72	86	96	144
240 V. at 2.4 Amps per kWh	58	72	86	96	101	115	144	173	192	288
208 V. at 2.8 Amps per kWh	67	84	101	112	118	134	168	202	224	336
1 PHASE 240 V. at 4 Amps/kWh	96	120	144	160	168	192	240	288	320	---
Dim. Boiler Only: (&boiler w/feed pump)										
W		22					24			24
L		26					30			30
H		42					48			56
Dim.COMPACT skid system:										
W		32					32			33
L		36					36			36
H		42					48			56
Steam outlet - NPT		1/2"					1"			1"
Blowdown* Outlet Pipe Size		3/4"					1"			1"
Electrical Connection Opening*		1"			1.1/2"	1.1/2"	1.1/2"	2"	2"	2x2"
Safety Valve Outlet Pipe Size		1"					1"			1"
Max. Water Consumption GL/Hr	9.6	12	14	16	17	19	24	29	32	48
Boiler Approx. Weight . - Lb	350	350	350	350	400	400	400	425	425	600
Compact Sys Approx. Weight - Lb	550	550	550	550	600	600	600	625	625	800
Shipping Crate ADD Approx. - Lt	35	35	35	35	50	50	50	50	50	60

* Blowoff Vent size: Std 2" NPS opr 2.1/2 Copper

Makeup tank Vent: Std 2" NPS (minimum 1.1/2 NPS or 2" copper)

CONSTRUCTION: Carbon Steel Boiler Plate w/Sch 80 & Brass Piping on Wetted Parts

Available in All Stainless Steel (Boiler & Piping) for medical/farma. Clean-steam applications

CONTROLS: Dual-Reset on Low-water and Pressure

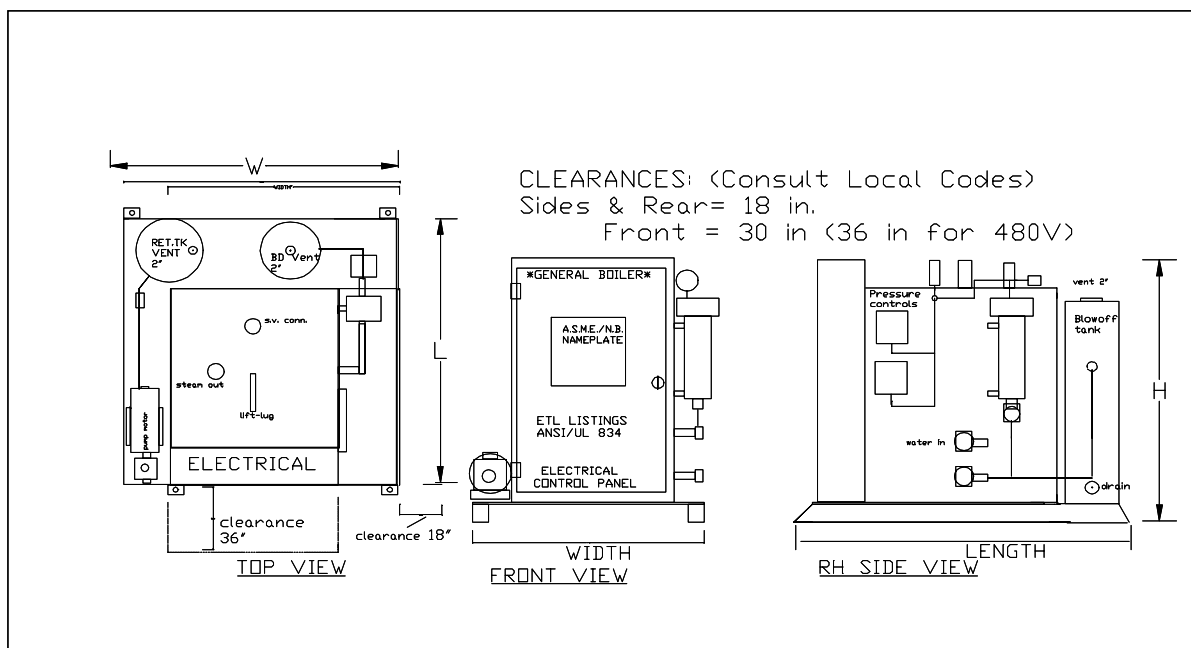
LISTINGS: ETL - UL/ANSI STDS.; ASME M or S Stamped-CSD-1 Controls; Natl. Board

RETURN AND BLOWDOWN VENTS: 2 in NPT

WATER INLET TO MAKEUP TANK: 1/2 in NPT.- CONDENSATE RETURN INLET 1" ALL BLRS.

BLOWDOWN DRAIN to FLOOR SINK: 2 in.; Water cooling: 1/2 in.

Electrical openings: one size larger for single phase 2" for 60KW (2x2" for 72 & 80KW)



file: ELE BLR ALL/SPCS_GE_24_80 Ret & BD COMPACT 2006